

# Data Sheet

**Product Name:** Total RNA

**Catalog No.:** R1634330

**Lot No.:** C206075

**Species:**  Human  Mouse  Rat  Monkey (Rh)  Guinea Pig  Porcine  
 Bovine  Hamster  Dog  Monkey (Cy)  Rabbit  Plant

**Tissue Type:**  Normal  Adult  Fetal  Tumor  Disease  Cell Line

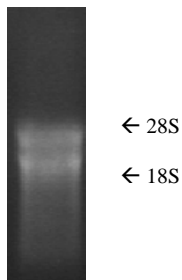
**Tissue Name:** Corn

**DNase I Treatment:**  Yes  No

**Components:**

1. 100 µg total RNA per package; Concentration 2.05 µg/µl.
2. Certificate of Analysis

**Product Image:**



**Fig. 1** Total RNA was analyzed by electrophoresis on 1% agarose gel

**FOR IN VITRO RESEARCH USE ONLY**

**APPROVED BY:** 