

BioChain's xTractPure™ Cell and Tissue DNA Extraction Kit

BioChain's xTractPure Cell and Tissue DNA Extraction Kit uses magnetic beads to quickly and safely isolate high-quality DNA from mammalian cells and tissues, without toxic chemicals.



Advantages & Features

- Fast, efficient extraction of high-quality DNA
- Safe, non-toxic method
- High DNA recovery for downstream applications
- Magnetic beads based technology
- Compatible with NGS, qPCR, and PCR
- Scalable, fast turn around time
- High-throughput processing in 1 hour with AnaPrep 48

The AnaPrep 48 instrument allows you to process up to 48 samples in under an hour, making it perfect for high-throughput applications like NGS, qPCR, genomics, and



Sample ID	DIN	Conc. [ng/ µl]	260/280	260/230
XtractPure Kidney	8.6	48.9	1.88	2.40
Competitor kidney	9.6	56.4	1.87	2.38
XtractPure colon-1	8.7	79.9	1.92	2.37
Competitor colon-1	7.9	113	1.86	2.30
XtractPure colon-2	9.2	60.4	1.92	2.34
Competitor colon-2	9.2	61.1	1.86	2.33

Table 1. Results for the DNA extracted from 3 fresh frozen tissues using BioChain's XtractPure kit on AnaPrep 48 and using competitor's kit. The samples were processed with automated magnetic beads protocols.

Learn More



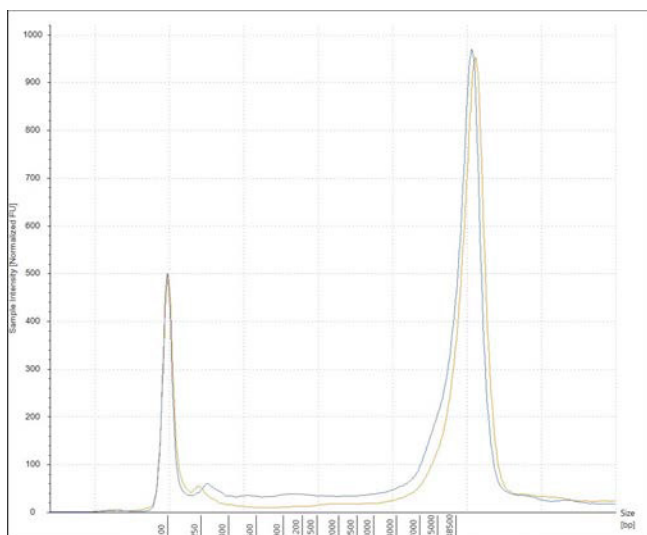


Figure 1. TapeStation results for kidney sample using XtractPure Kit on Anaprep 48 (blue) vs the competitor (yellow), showing excellent results in terms of integrity.

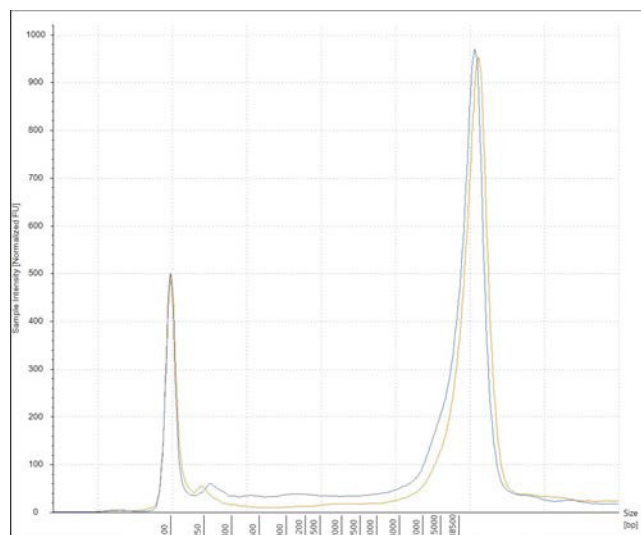


Figure 2. TapeStation results for colon samples using XtractPure Kit on Anaprep 48 (blue) vs the competitor

Note: The xTractPure Cell and Tissue DNA Extraction Kit is also optimized to work in the ThermoFisher KingFisher Flex automated extraction system and delivers superior results. Please contact BioChain technical support for the protocols.

Ordering Information

Catalog No.	Product	Unit
Z2212005	xTractPure™ Cell and Tissue Nucleic Acid Extraction Kit	1 kit
Z2212099	xTractPure™ DNase-Treatment Box	1 kit (48 preps)
Z2212000	Deep Well Plates and Tip Combs Set	1 kit

xTractPure Kits Selection Guide

Assay type	Product	FFPE	Cell line	Tissue	Blood	Buffy coat	Swab	Saliva
DNA	xTractPure Biofluids				•	•	•	•
	xTractPure Cell & Tissue DNA		•	•				
	xTractPure FFPE DNA	•						
RNA	xTractPure Blood Total RNA				•			
	xTractPure Cell Line RNA		•					
	xTractPure FFPE RNA	•						
DNA & RNA	xTractPure FFPE DR (DNA & RNA)	•						

Please contact us and learn more about other kits, applications and automation protocols.